



IMHAPS

INSTITUTE OF MENTAL HEALTH AND
PSYCHOLOGICAL SCIENCES

School Mental Health





IMHAPS
INSTITUTE OF MENTAL HEALTH AND
PSYCHOLOGICAL SCIENCES



VISION

We envision a world where students, teachers, and parents thrive in an environment that fosters mental well-being and holistic growth.

We aspire to be a beacon of support and guidance, providing evidence based comprehensive psychology services tailored to the unique needs of students, educators, and families.





IMHAPS

INSTITUTE OF MENTAL HEALTH AND
PSYCHOLOGICAL SCIENCES

MISSIONS

01

Our mission is to foster resilient and thriving communities by nurturing the mental health and well-being of students, teachers, and parents.

02

We are dedicated to promoting awareness, facilitating screening, conducting assessments, and diagnosing mental illnesses to ensure early intervention and support.

03

Through comprehensive psychological services, we aim to empower individuals to overcome challenges and achieve their full potential.





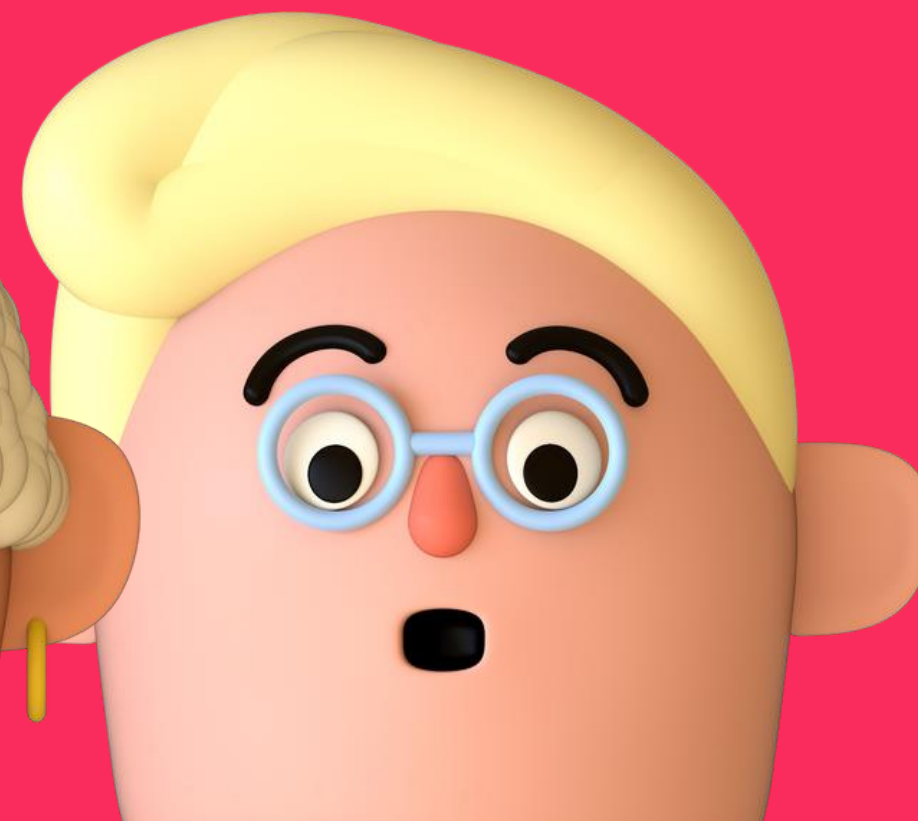
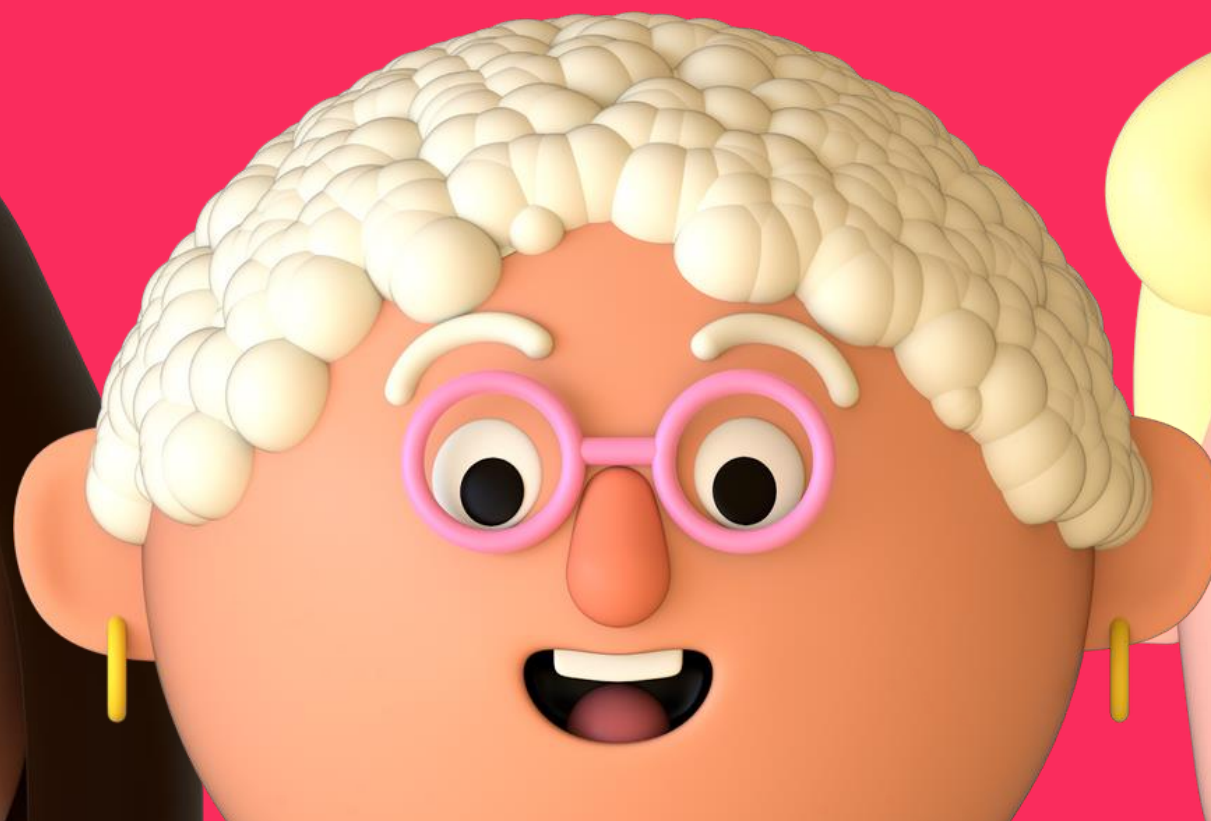
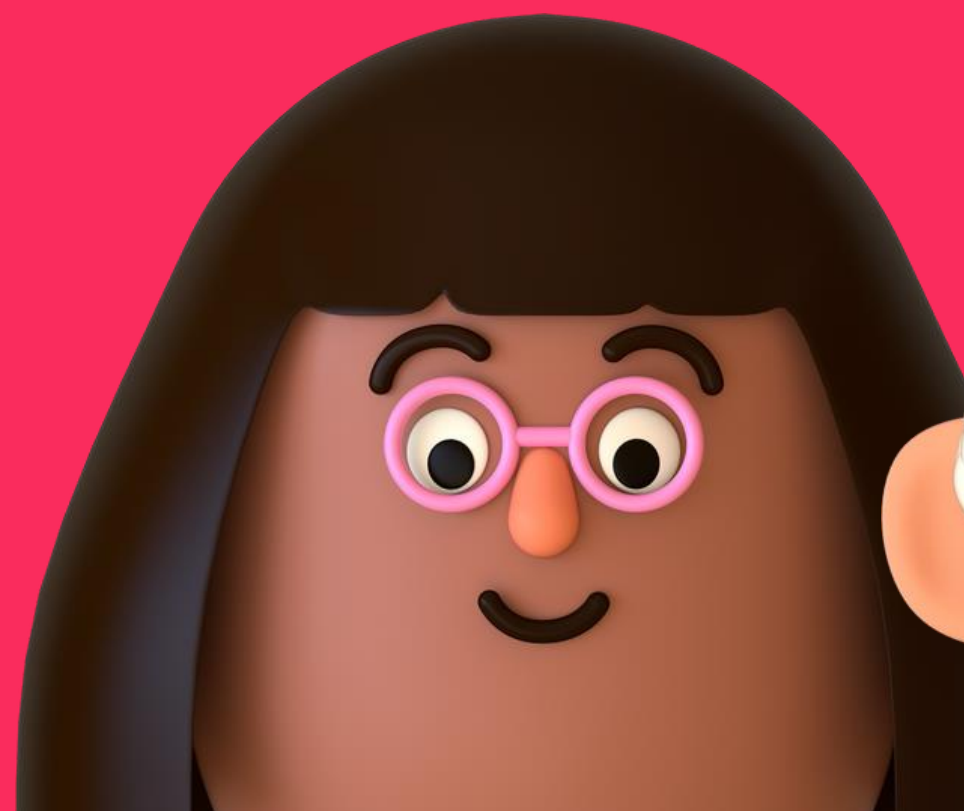
IMHAPS
INSTITUTE OF MENTAL HEALTH AND
PSYCHOLOGICAL SCIENCES

Target groups

Students

Parents

Teachers





IMHAPS

INSTITUTE OF MENTAL HEALTH AND
PSYCHOLOGICAL SCIENCES



SERVICES

- Awareness camps
- Screening
- Assessment & Diagnosis
- Training & Remediation
- Psychosocial intervention





Prevalent issues

Intellectual Disability

Learning Disability

Behavioral Problems

Emotional Difficulties

Interpersonal problems

Socio-emotional skill deficit



Domains of Psychological assessments

Intelligence assessments

Learning disability

Vocational aptitude tests

Personality & interest tests

Mental Health screening

Socio-emotional skills
assessment



IMHAPS

INSTITUTE OF MENTAL HEALTH AND
PSYCHOLOGICAL SCIENCES



Types of counselling

- Psychoeducation
- Individual counselling
- Group counselling
- Career counselling

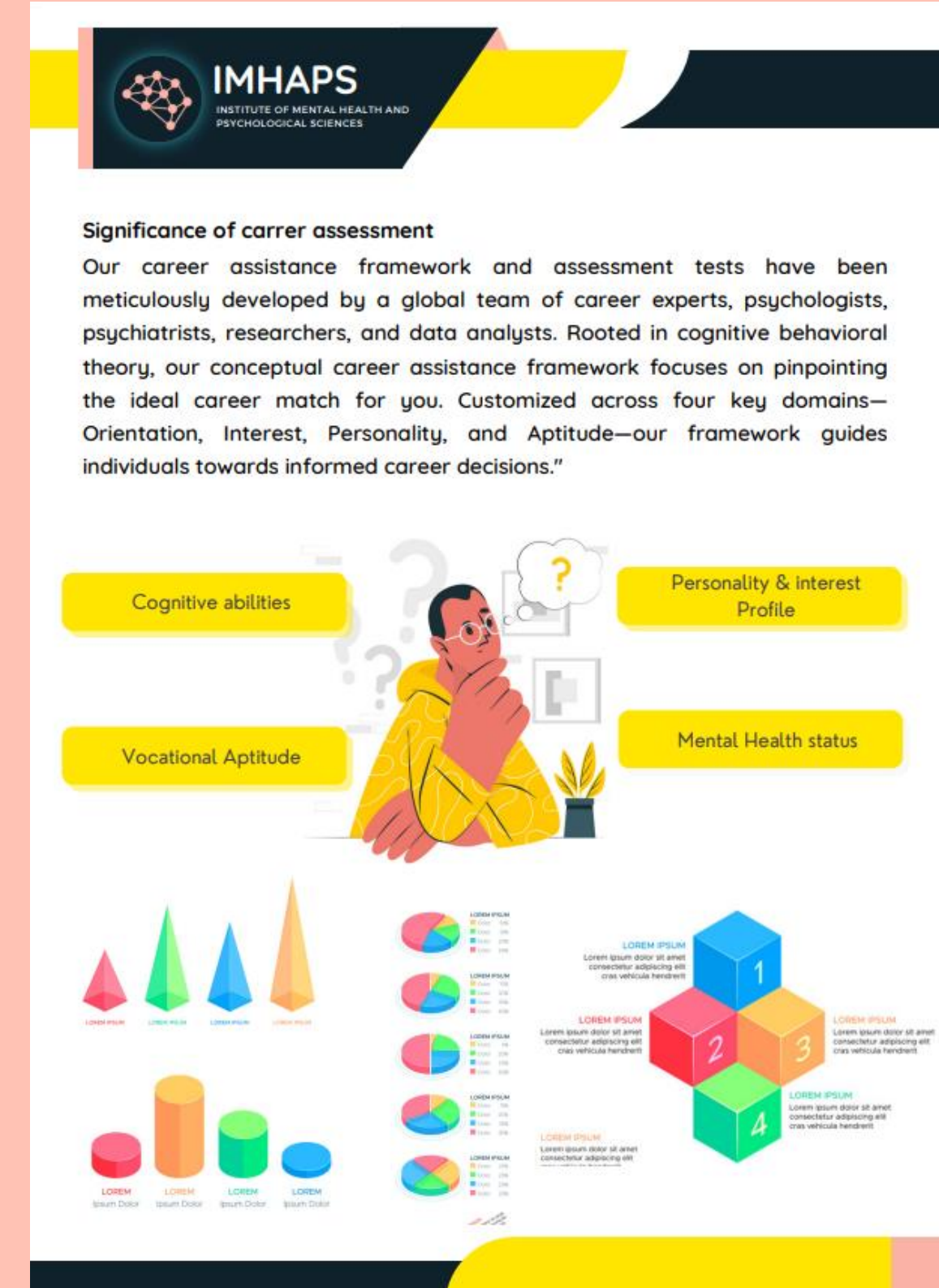
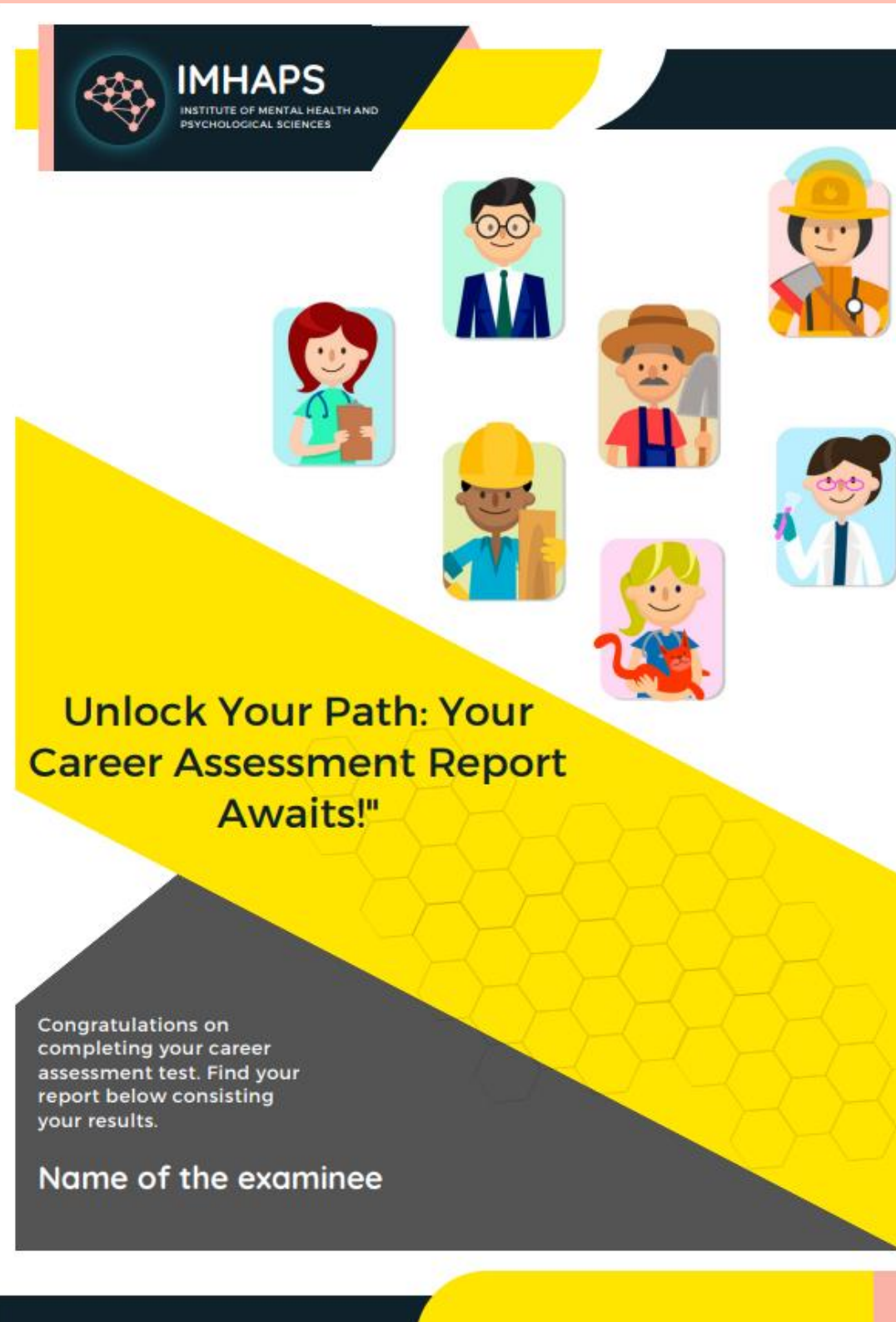




IMHAPS

INSTITUTE OF MENTAL HEALTH AND
PSYCHOLOGICAL SCIENCES

Report Template



Thank You

